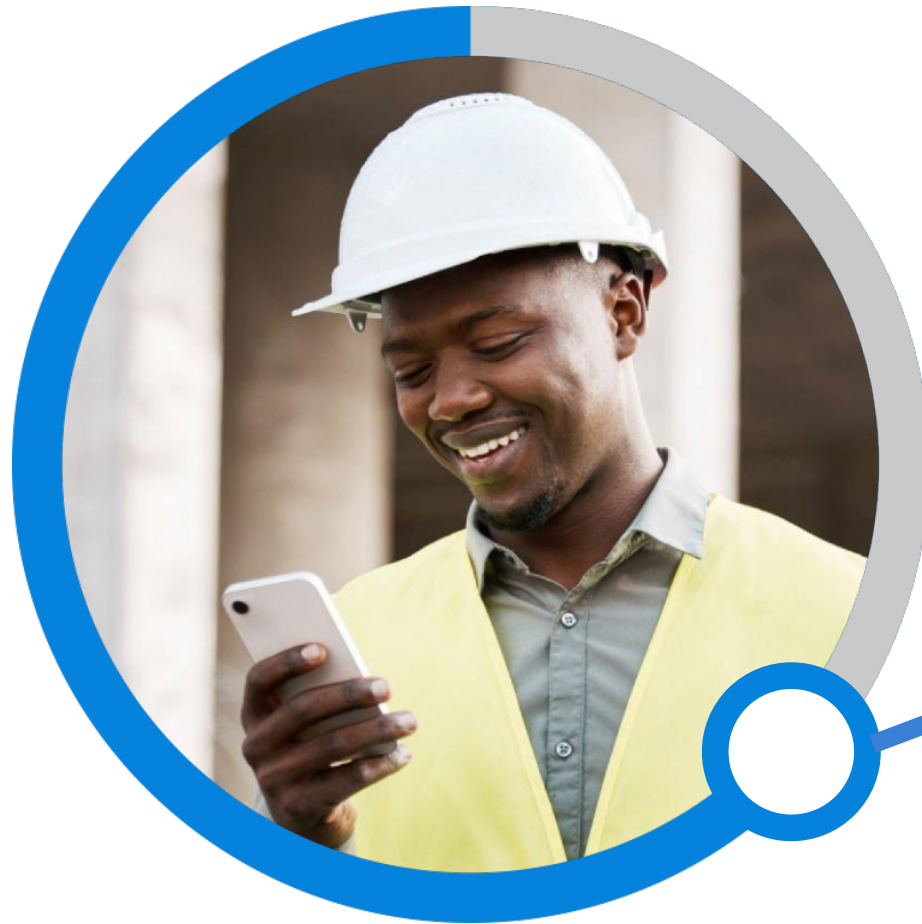


truhu

**The last recommendation
you'll make to help your
client connect with their
hard-to-reach employees.**





60%

60% of the US workforce are employees that are deskless. These employees are often hard-to-reach for brokers & plan sponsors.

Solving for This Has Traditionally Been Expensive and Results Remain Inconsistent

An iceberg diagram where the tip is above a dark blue horizontal line representing the water surface. The tip is a jagged, light blue shape. The submerged part is a larger, darker blue shape. Four white lines with arrowheads point from text labels to the submerged part. The text labels are: 'Outsource to an enrollment service' (top left), 'Deploy additional staff' (bottom left), 'Schedule in-person visits' (top right), and 'Implement new benefit app technology' (bottom right).

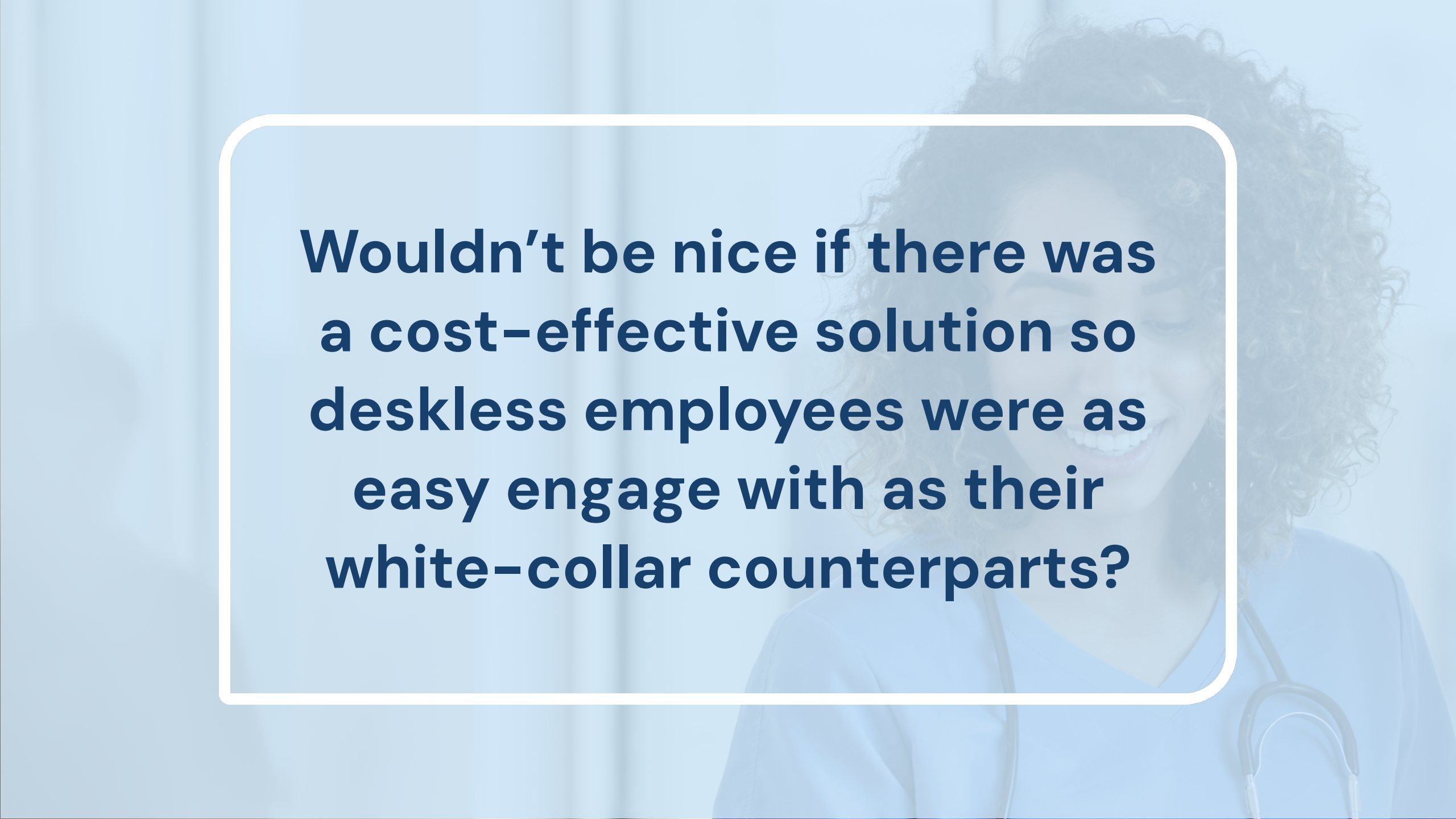
EXPENSIVE & INCONSISTENT

Outsource to an enrollment service

Deploy additional staff

Schedule in-person visits

Implement new benefit app technology



**Wouldn't be nice if there was
a cost-effective solution so
deskless employees were as
easy engage with as their
white-collar counterparts?**

By Investing in a Solution for Your Hard-to-reach Employer Groups, You'll See Results



We Can Close the Gap



White glove client
setup managed
by TruHu

250,000+

Deskless employees
actively using



Of all companies
use monthly



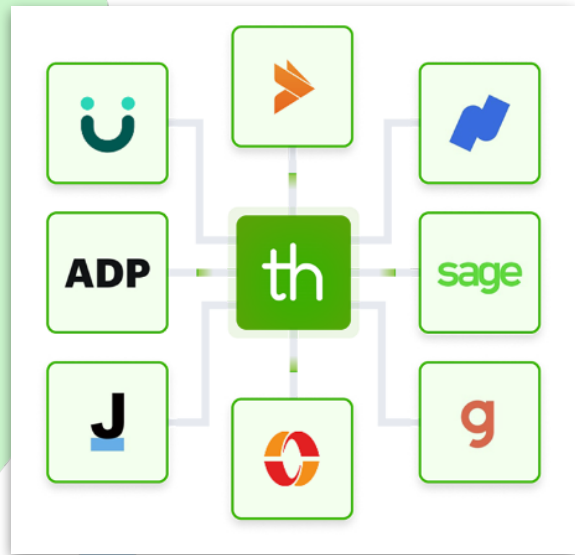
A construction worker wearing a yellow hard hat, safety glasses, and a high-visibility vest is holding a set of blueprints. The image is overlaid with a semi-transparent blue filter and a white rounded rectangle containing text.

**The platform features that
solve real issues with plan
sponsors of deskless
employees.**

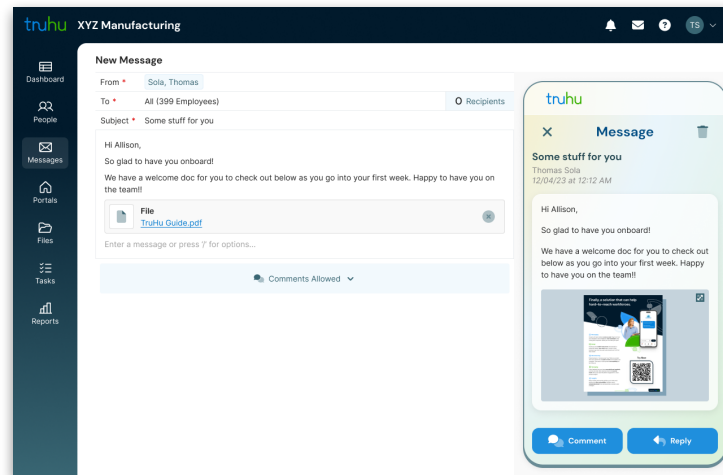
Save Time & Get Results With Internal Communication Tracking



Easy to Setup, Fast to Engage



Easy to keep employee data up to date with innovative census model & integrations



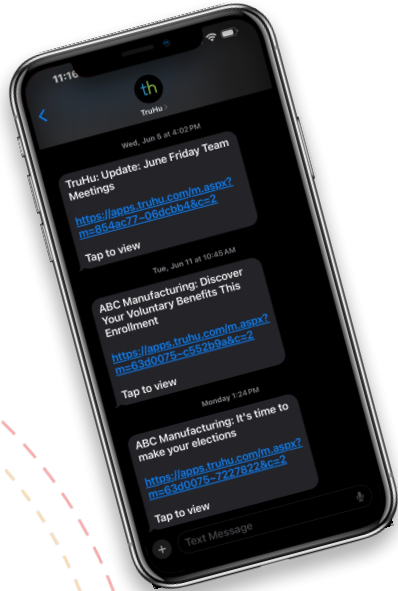
Its simple "feels like outlook" to send texts & emails



It's branded to the client out of the box

truhu

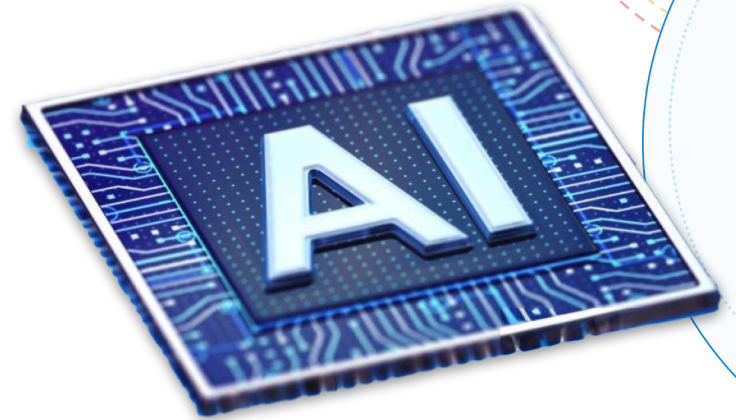
Nothing to Implement With Employees



**Open enrollment starts in 2 weeks!
See what's new**

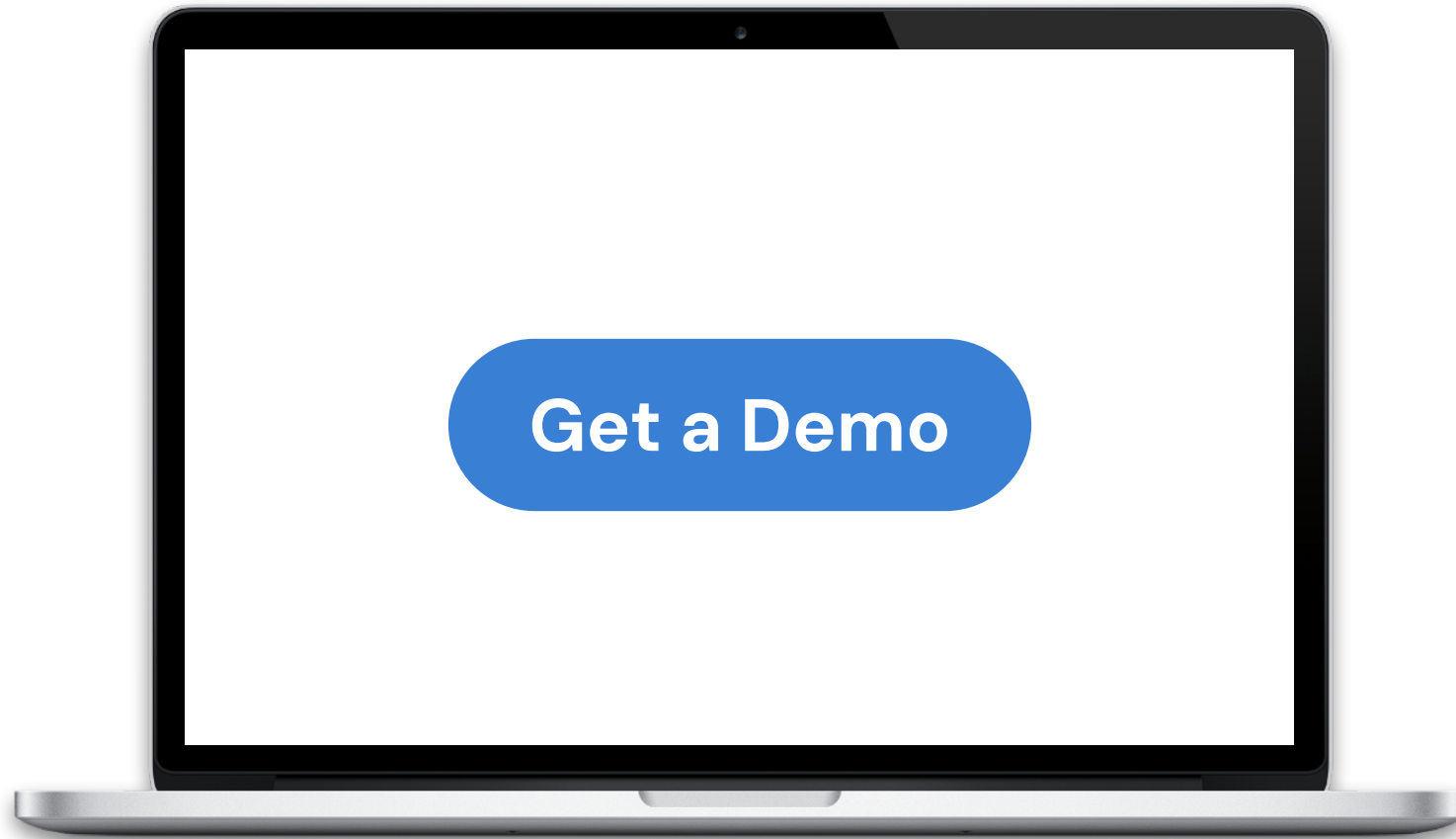


**Works on any device,
even flip phones**



Admin messages are auto-translated via AI to the employees native language

Next Step: Let Us Show You How Brokers & Clients Use This in a Demo



truhu